



BUG ID

Fact Sheet

You will need:

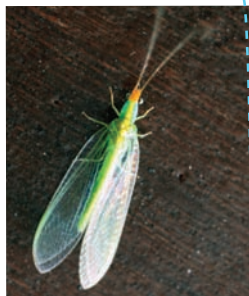
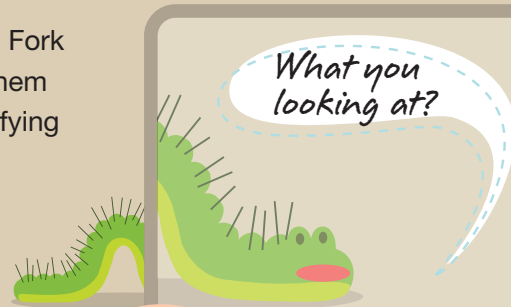
- A magnifying glass
- A pen or pencil

How to ID bugs

These are the bugs we commonly spot on our Field to Fork tours at Natures Way Foods, but see if you can spot them around yourself! To ID the type of bug, get your magnifying glass and use it to take a closer look.

- How many legs do they have?
- What colour are they?
- Do they have any patterns on them?
- Do they fly, jump or wriggle?

**Can you identify the ones listed here?
If you do - tick them off as spotted!**



Lacewing Chrysoperla carnea

FACTS

- Both the larvae and the adult are predators of aphids
- The adult Lacewing has delicate lace-like wings which are transparent
- Seen during April to October

spotted?



The lettuce currant aphid Nasonovia ribisnigri

FACTS

- Over the winter it sleeps on currants and gooseberries
- They can get inside the lettuce within 24 hours of landing on the leaf
- Infestations are worse from August onwards

spotted?



Turn for
more
bugs >



Hoverfly Larvae *Syrphus ribesii*

FACTS

- They feed on aphids
- The adult hoverfly have distinct yellow and black markings, which can be mistaken for a wasps and bees
- Seen during March to November

spotted?



The peach-potato aphid *Myzus persicae*

FACTS

- They damage plants in two ways, either directly by piercing the leaf and sucking the sap, or indirectly by infecting the plant with a virus
- Pale green in appearance
- Give birth to as many as 5 live young a day in warmer months

spotted?



The Silver Y moth *Autographa gamma*

FACTS

- The moth that can most seriously affect salad crops
- Distinctive silvery white Y-shaped marking on each forewing
- They migrate from the Mediterranean

spotted?



More at home

You can also use your magnifying glass to see how many other different bugs you can find in your gardens at home.

Common garden bugs are ants, beetles, butterflies, centipedes, crickets, daddy-long-legs, earwigs, grasshoppers, ladybirds, spiders, weevils and woodlice.

Remember to leave the bugs where they are or put them back where you found them if you pick them up!

